

## Installation Guide:

### 1. Step 1:

- Download Magecaptain\_Core from this GIT link and place inside your Project root/app/code/  
<https://github.com/magecaptain/core>

### 2. Step 2:

- Download Extension and place inside your Project root/app/code/

### 3. Step 3:

- In magento root directory run the following commands using the command line:

```
php bin/magento setup:upgrade  
php bin/magento setup:static-content:deploy
```

### 4. Step 4:

- Login to Magento admin and enable extension at  
Stores=>Configuration=>MageCaptain=> Render Blocking JS

### 5. Step 5:

- That's it, you're done.

## Description:

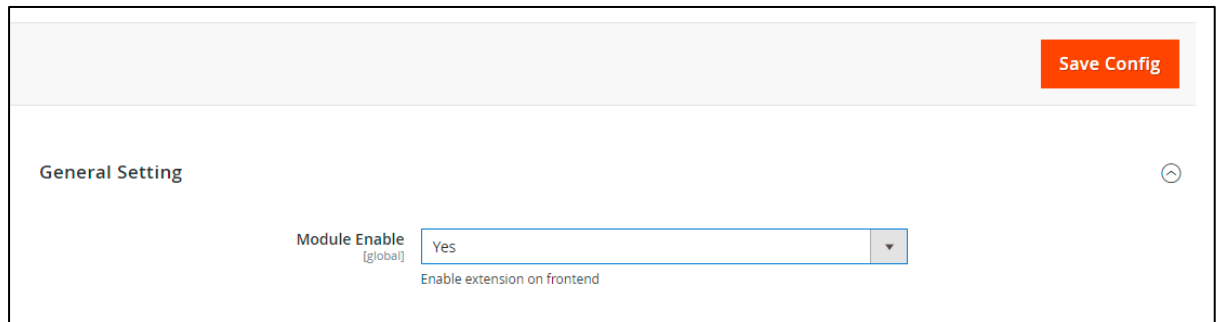
A Magento 2 module to place script tag before end of page body to improved website optimization score. Magecaptain developed Extension to Eliminate Render Block issue for Script

# How to Use:

## Admin panel

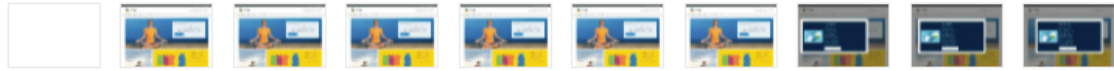
- ❖ Set Global Configuration from this way:

Stores=>Configuration=>MageCaptain=> Render Blocking JS



The screenshot shows a configuration page with a light gray header bar containing a red "Save Config" button. Below the header, the page is titled "General Setting" with a collapse icon on the right. The main content area features a "Module Enable" setting with a "[global]" tag. The value is set to "Yes" in a dropdown menu. Below the dropdown, the text "Enable extension on frontend" is displayed.

## Without Render Blocking JS Extension - DESKTOP



Show audits relevant to: **All** FCP LCP TBT CLS

**Opportunities** — These suggestions can help your page load faster. They don't **directly affect** the Performance score.

Opportunity Estimated Savings

**▲ Eliminate render-blocking resources** 0.94 s ^

Resources are blocking the first paint of your page. Consider delivering critical JS/CSS inline and deferring all non-critical JS/styles. [Learn more.](#) FCP LCP

URL	Transfer Size	Potential Savings
...mage/calendar.css (143.110.188.35)	1.7 KiB	70 ms
...css/styles-m.css (143.110.188.35)	61.0 KiB	310 ms
...css/jquery.countdownTimer.css (143.110.188.35)	0.8 KiB	110 ms
...css/formbuilder.css (143.110.188.35)	1.4 KiB	110 ms
...css/gift.css (143.110.188.35)	0.8 KiB	110 ms
...css/slick.css (143.110.188.35)	1.0 KiB	110 ms
...css/slick-theme.css (143.110.188.35)	1.2 KiB	70 ms
...css/productslider.css (143.110.188.35)	0.9 KiB	70 ms
...css/styles-l.css (143.110.188.35)	17.8 KiB	150 ms
/media/styles.css (143.110.188.35)	4.0 KiB	70 ms
...requirejs/require.js (143.110.188.35)	20.2 KiB	150 ms
...requirejs/mixins.js (143.110.188.35)	2.5 KiB	70 ms
...en_US/requirejs-config.js (143.110.188.35)	5.7 KiB	70 ms

## Without Render Blocking JS Extension - MOBILE



Show audits relevant to: **All** FCP LCP TBT CLS

**Opportunities** – These suggestions can help your page load faster. They don't directly affect the Performance score.

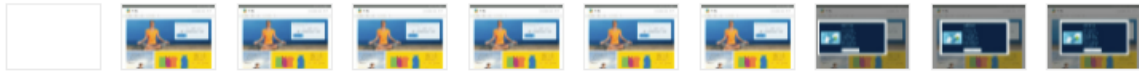
Opportunity Estimated Savings

- ▲ Reduce initial server response time 7.9 s ▾
- ▲ Eliminate render-blocking resources 2.45 s ▲

Resources are blocking the first paint of your page. Consider delivering critical JS/CSS inline and deferring all non-critical JS/styles. [Learn more.](#) FCP LCP

URL	Transfer Size	Potential Savings
...mage/calendar.css (143.110.188.35)	1.7 KiB	180 ms
...css/styles-m.css (143.110.188.35)	61.0 KiB	1,230 ms
...css/jquery.countdownTimer.css (143.110.188.35)	0.8 KiB	330 ms
...css/formbuilder.css (143.110.188.35)	1.4 KiB	330 ms
...css/gift.css (143.110.188.35)	0.8 KiB	330 ms
...css/slick.css (143.110.188.35)	1.0 KiB	330 ms
...css/slick-theme.css (143.110.188.35)	1.2 KiB	180 ms
...css/productslider.css (143.110.188.35)	1.0 KiB	180 ms
/media/styles.css (143.110.188.35)	4.0 KiB	180 ms
...requirejs/require.js (143.110.188.35)	20.2 KiB	630 ms
...requirejs/mixins.js (143.110.188.35)	2.5 KiB	180 ms
...en_US/requirejs-config.js (143.110.188.35)	5.7 KiB	330 ms

## With Render Blocking JS Extension - DESKTOP



Show audits relevant to: **All** FCP LCP TBT CLS

**Opportunities** — These suggestions can help your page load faster. They don't **directly affect** the Performance score.

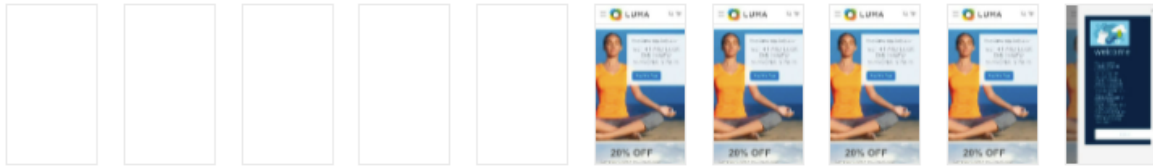
Opportunity Estimated Savings

**■ Eliminate render-blocking resources**  **0.68 s** ^

Resources are blocking the first paint of your page. Consider delivering critical JS/CSS inline and deferring all non-critical JS/styles. [Learn more.](#) FCP LCP

URL	Transfer Size	Potential Savings
...mage/calendar.css (143.110.188.35)	1.7 KiB	70 ms
...css/styles-m.css (143.110.188.35)	61.0 KiB	270 ms
...css/jquery.countdownTimer.css (143.110.188.35)	0.8 KiB	110 ms
...css/formbuilder.css (143.110.188.35)	1.4 KiB	110 ms
...css/gift.css (143.110.188.35)	0.8 KiB	110 ms
...css/slick.css (143.110.188.35)	1.0 KiB	110 ms
...css/slick-theme.css (143.110.188.35)	1.2 KiB	70 ms
...css/productslider.css (143.110.188.35)	0.9 KiB	70 ms
...css/styles-l.css (143.110.188.35)	17.8 KiB	110 ms
/media/styles.css (143.110.188.35)	4.0 KiB	70 ms

## With Render Blocking JS Extension – MOBILE



Show audits relevant to: **All** FCP LCP TBT CLS

**Opportunities** – These suggestions can help your page load faster. They don't **directly** affect the Performance score.

Opportunity Estimated Savings

**▲ Eliminate render-blocking resources** 1.72 s ^

Resources are blocking the first paint of your page. Consider delivering critical JS/CSS inline and deferring all non-critical JS/styles. [Learn more.](#) **FCP** **LCP**

URL	Transfer Size	Potential Savings
...mage/calendar.css (143.110.188.35)	1.7 KiB	180 ms
...css/styles-m.css (143.110.188.35)	61.0 KiB	930 ms
...css/jquery.countdownTimer.css (143.110.188.35)	0.8 KiB	330 ms
...css/formbuilder.css (143.110.188.35)	1.4 KiB	330 ms
...css/gift.css (143.110.188.35)	0.8 KiB	330 ms
...css/slick.css (143.110.188.35)	1.0 KiB	330 ms
...css/slick-theme.css (143.110.188.35)	1.2 KiB	180 ms
...css/productslider.css (143.110.188.35)	0.9 KiB	180 ms
/media/styles.css (143.110.188.35)	4.0 KiB	180 ms

## Features:

- Enable/Disable extension from a backend.
- Easy to Setup
- No need any technical Knowledge
- Eliminate Render Blocking Script Issue